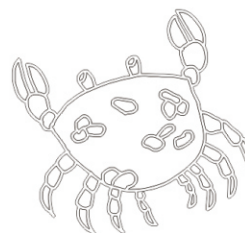


This note is **ON** a line.



This note is **IN** a space.



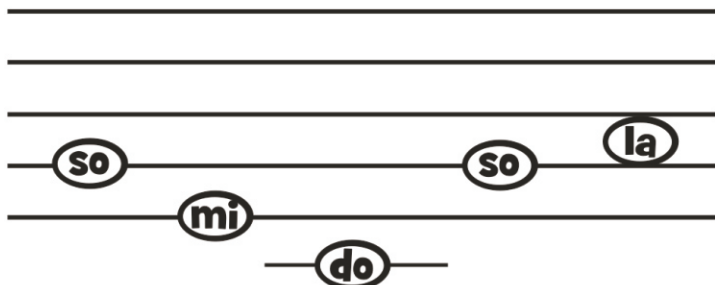
Circle the correct answer for this song.

mi is on a line is in a space

la is on a line is in a space

do is on a line is in a space

so is on a line is in a space



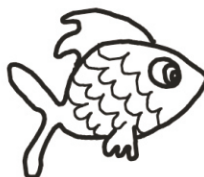
Fill in the missing solfa above each note.

Use a "d" for "do".

Use a "m" for "mi".

Use a "s" for "so".

Use a "l" for "la".



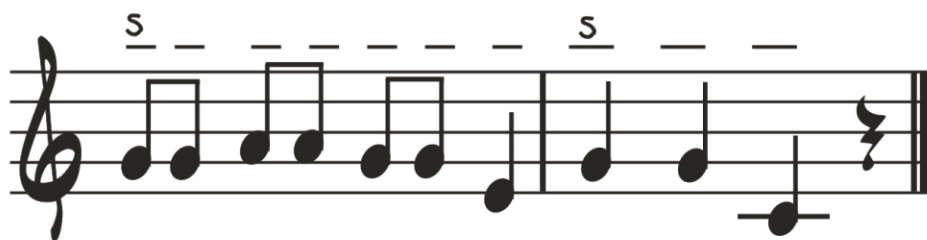
Ickle Ockle

Key C, first note G(so)

Counting Game



Ick-le ock-le blue bot-tle, fish-es in the sea,



If you want to catch a fish, just choose me.

Connect the solfa with its handsign.

do



la



so



mi



re



do

Now try making the handsigns while you quietly sing the solfa.

