

/10

lines
5
4
3
2
1

spaces
4
3
2
1

fifth 5th
fourth 4th
third 3rd
second 2nd
first 1st

on a line in a space

Notes are either "on a line" or "in a space".

Below each note,
print its **number** and either **on a line** or **in a space**.

2 on a line

A

B

C

D

E

Mark the answers below.
If they are wrong,
print the correct answer.

X 4 on a line
✓ 3 on a line

5 on a line

1 on a line

3 in a space

4 in a space

2 on a line

K

Music challenge:
Print a quarter note in the fourth space.

Time Signatures

The numbers at the beginning of the first set of staff lines in a song are said: "3, 4, metre" and they are called the **time signature**.



$\frac{3}{4}$ 3 beats in every bar
 note gets a beat
 "ta" gets a beat
 ♪ is a quarter ($\frac{1}{4}$) note

In written music, notes are **grouped in sets**.



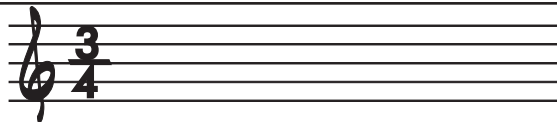
Circle the correct time signature.

A		$\frac{2}{4}$	$\frac{3}{4}$	$\frac{4}{4}$
B		$\frac{2}{4}$	$\frac{3}{4}$	$\frac{4}{4}$
C		$\frac{2}{4}$	$\frac{3}{4}$	$\frac{4}{4}$
D		$\frac{2}{4}$	$\frac{3}{4}$	$\frac{4}{4}$
E		$\frac{2}{4}$	$\frac{3}{4}$	$\frac{4}{4}$
F		$\frac{2}{4}$	$\frac{3}{4}$	$\frac{4}{4}$
G		$\frac{2}{4}$	$\frac{3}{4}$	$\frac{4}{4}$
H		$\frac{2}{4}$	$\frac{3}{4}$	$\frac{4}{4}$
i		$\frac{2}{4}$	$\frac{3}{4}$	$\frac{4}{4}$
j		$\frac{2}{4}$	$\frac{3}{4}$	$\frac{4}{4}$

/10

Bonus Challenge **K**

Fill in ♪ |



Names of Notes and Rests

	notes		rests	
whole ta-a-a-a		1		shu-u-u-u
half ta-a		1/2		shu-u
quarter ta		1/4		sh
eighth ti-ti		1/8		s
sixteenth tika-tika		1/16		

If the time signature is 4/4,
then,
the name of the note
tells you how long to sing!

Time Signature 4/4



- whole note
- half note
- quarter note
- one eighth note
- two eighth notes
- four sixteenth notes

Print the name of the note that says: "Sing all this time!"

Or

Print the name of the rest that says: "Silence for all this time!"

A | |

E | |

quarter rest

I | |

B | |

F | |

J | |

C | |

G | |

Bonus Challenge Show

D | |

H | |

K | _____ |

half note